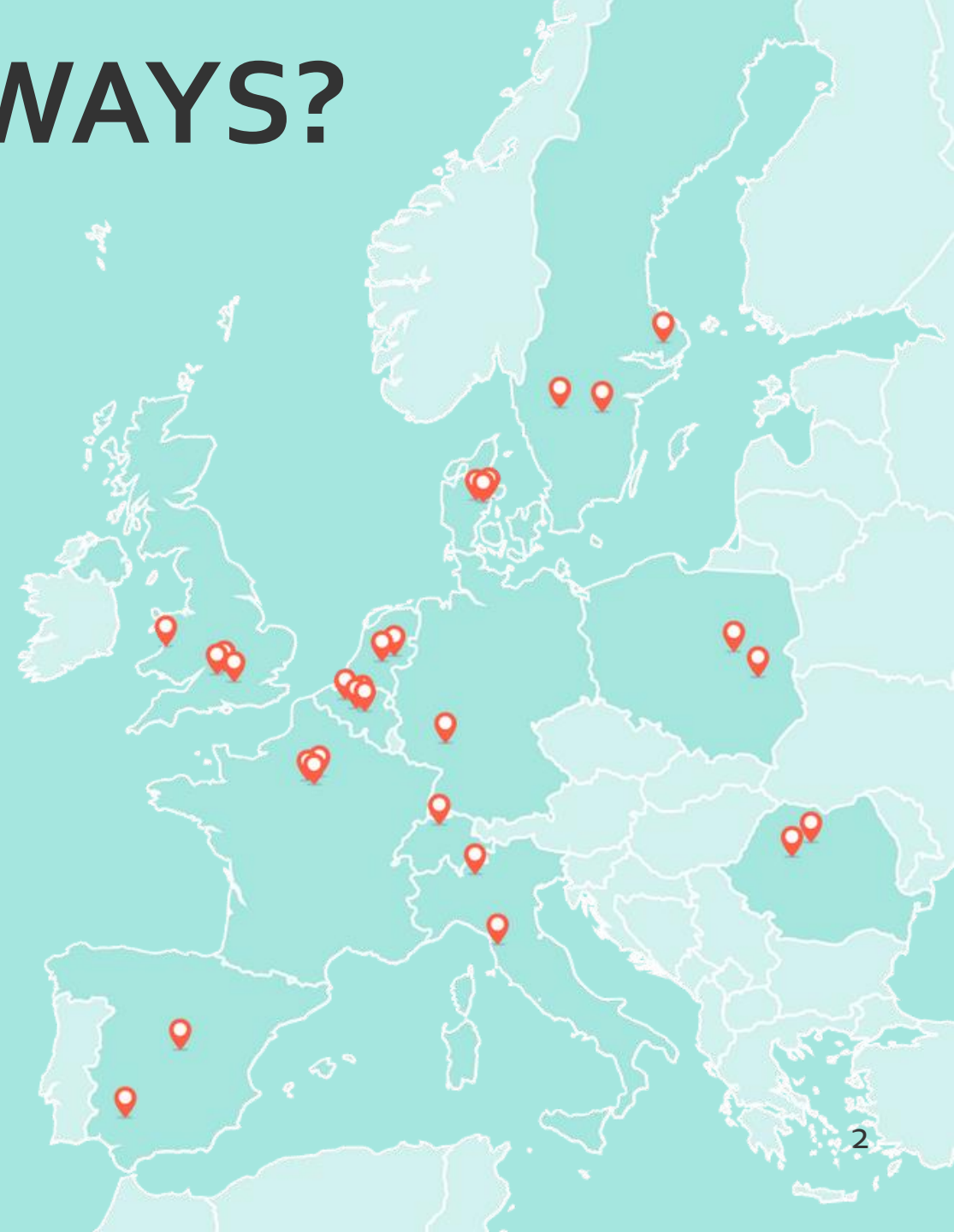


Key components in the implementation of the PATHWAYS project

Prof Harry Blokhuis and Dr Laurence Smith

What is PATHWAYS?

- European Union Horizon 2020 project
- 29 partners, 12 countries, 9M€
- Start date 1 September 2021



Focus of PATHWAYS

Identifying and increasing sustainable practices along the supply and production chains

European livestock (dairy, pork, beef, poultry meat, eggs, sheep and goats)



Livestock based farming

- Important role in food and nutrition security

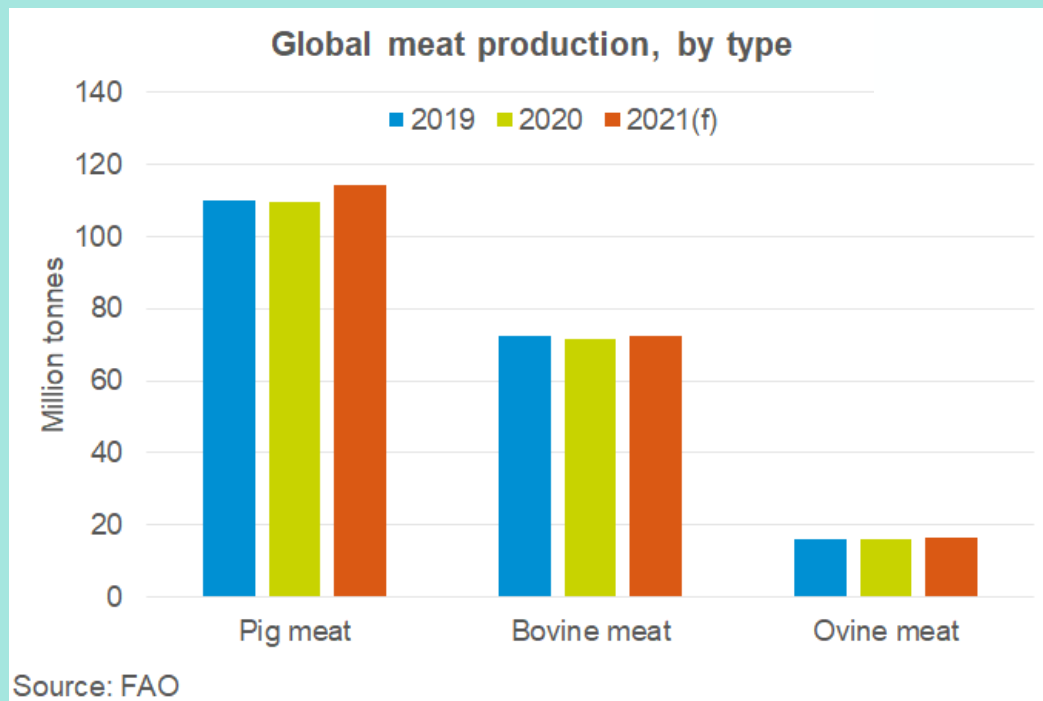


Photo:
Patrick Claesson



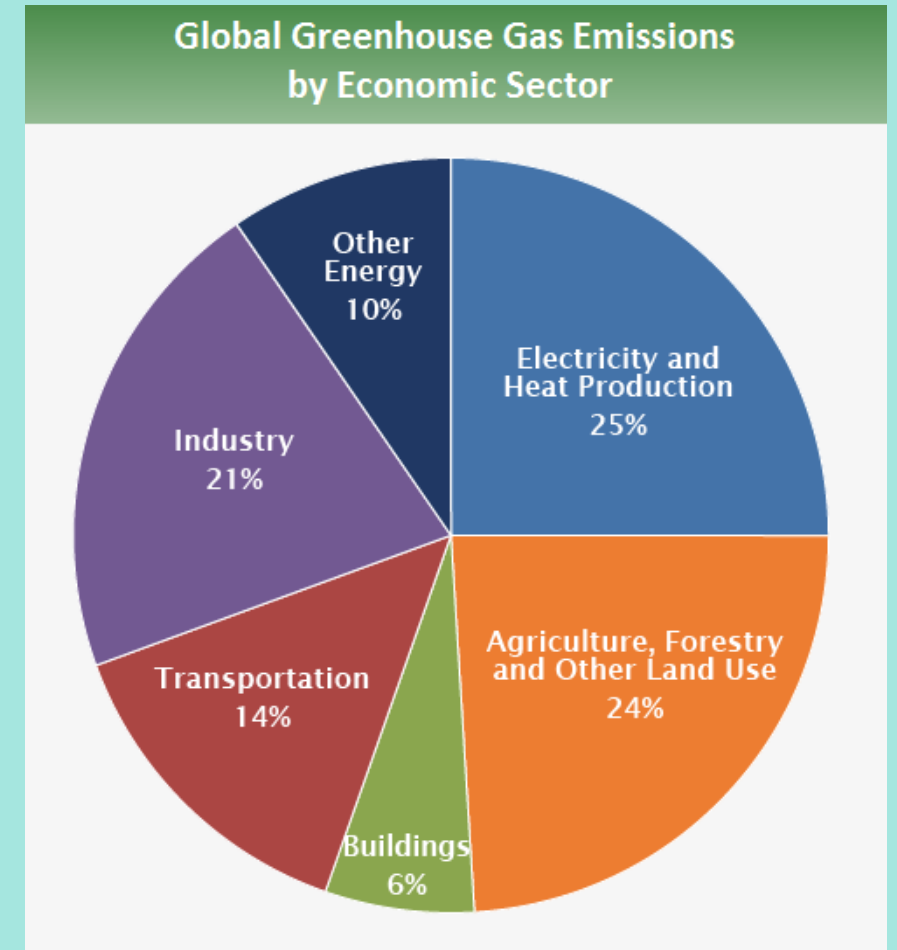
Livestock based farming

- Important role in food and nutrition security
- Contributes to the vitality of rural areas



Livestock based farming

- GHG emissions



IPCC, 2014
www.epa.gov



Livestock based farming

- GHG emissions
- Impacts on animal welfare and biodiversity



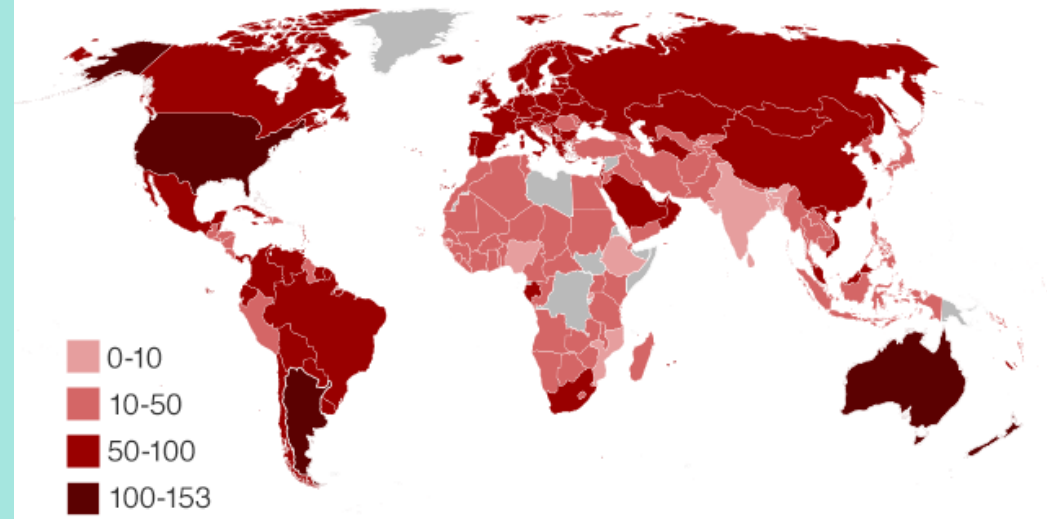
Livestock based farming

- GHG emissions
- Impacts on animal welfare and biodiversity
- Overconsumption of meat



Who eats the most meat?

Meat consumption (kg per person per year)



Source: UN Food and Agriculture Organization / Our World in Data

The challenge for sustainable development of the livestock sector

To stay within planetary boundaries whilst addressing societal demands, providing ecosystem services and supporting the needs of growing populations



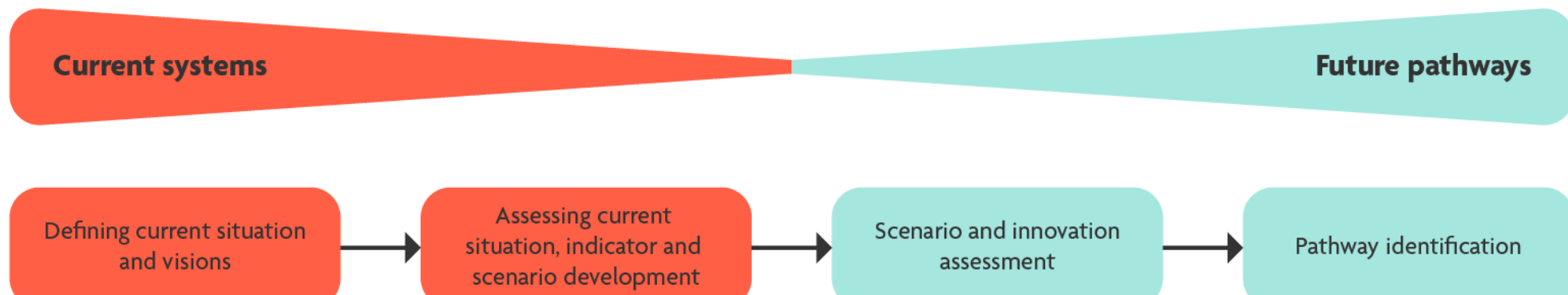
The objective of PATHWAYS

To inform policy, research and business strategies in support of a transition to more sustainable livestock production and consumption

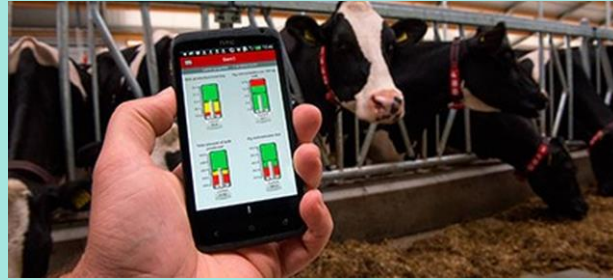


Steps

- Define current situation and sustainability visions
- Develop holistic assessment methodologies
- Identify and evaluate innovations
- Design and evaluate scenarios and transition pathways



Key project components



Practice hubs

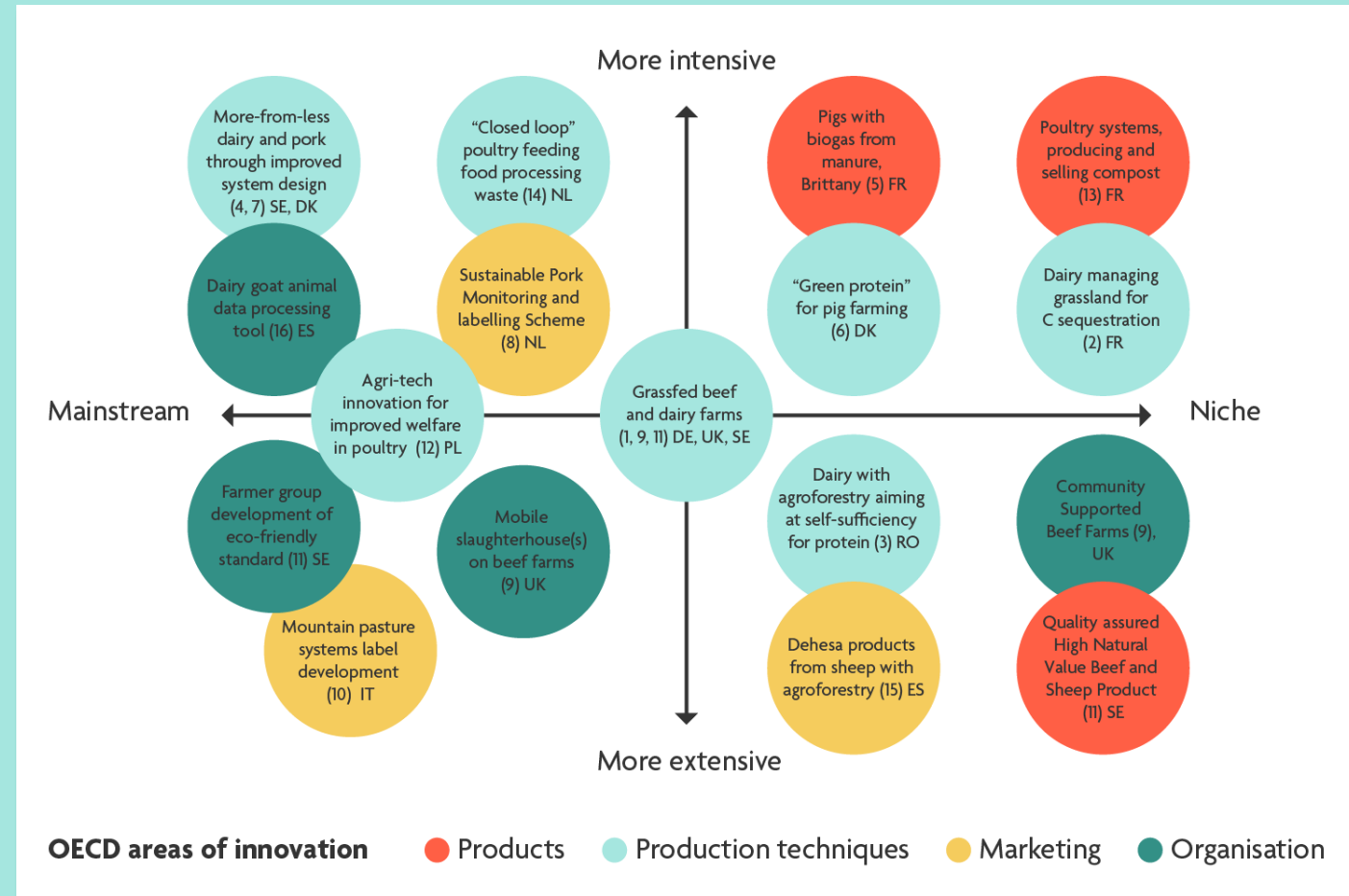


Multi-actor Platform



Practice hubs

- National groups of farmers organised around four OECD areas of innovation
- Led by industry partners in collaboration with a Facilitator
- Each hub is an innovative case-study for identifying “configurations that work” in a specific context



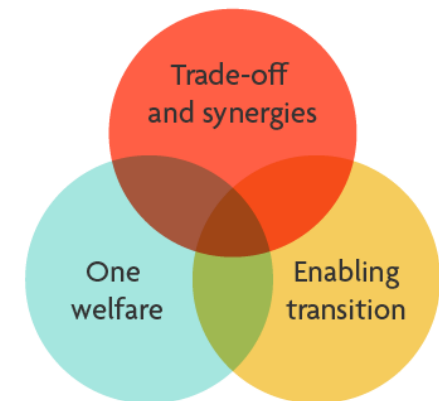
European multi-actor platform

- International supply chain actors
- Organised across three themes:
 1. Trade-offs and synergies
 2. One welfare
 3. Enabling transition
- Up to 50 individuals representing:
 - Pre and post farm gate industry
 - Consumer associations
 - NGOs
 - DGs



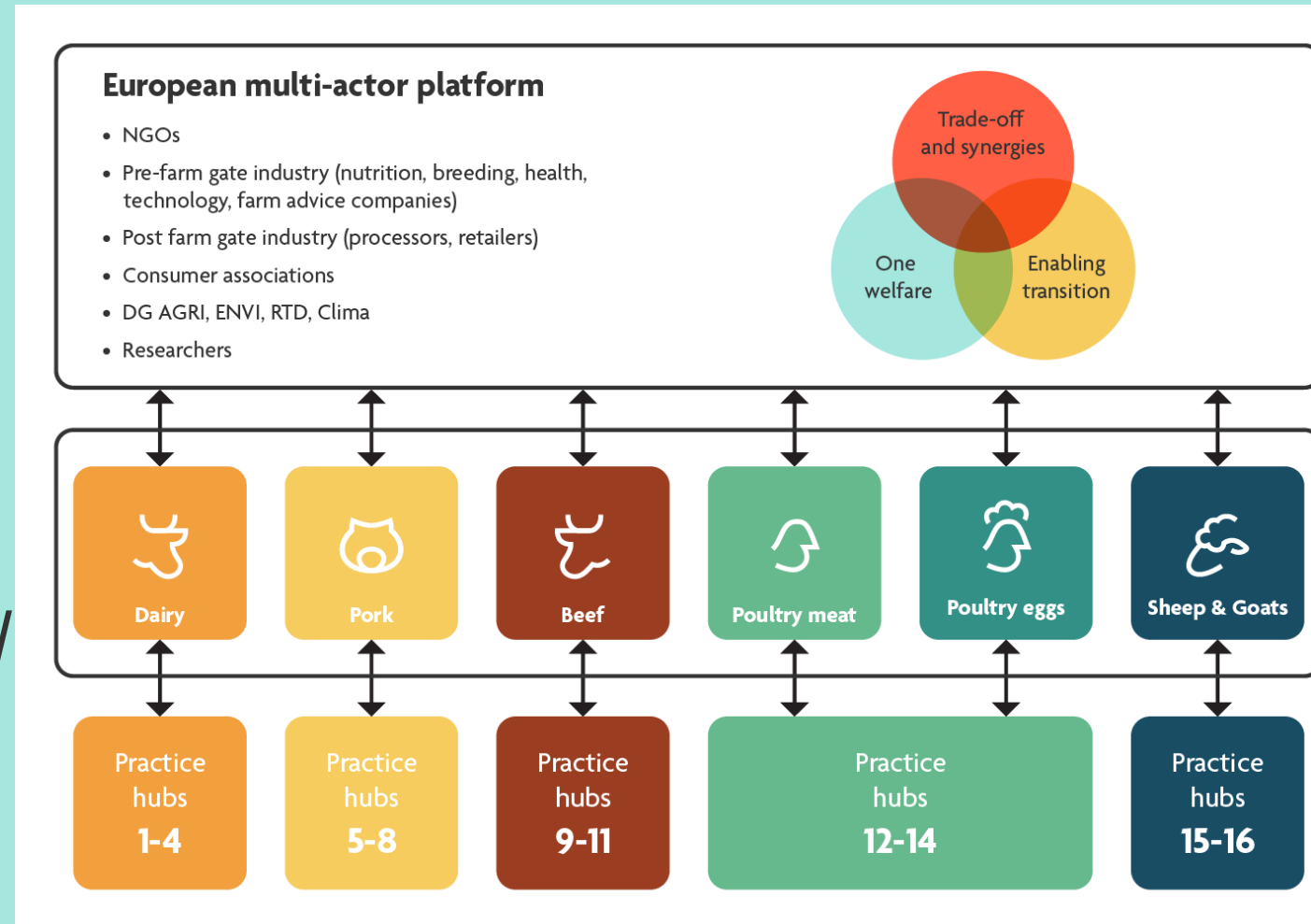
European multi-actor platform

- NGOs
- Pre-farm gate industry (nutrition, breeding, health, technology, farm advice companies)
- Post farm gate industry (processors, retailers)
- Consumer associations
- DG AGRI, ENVI, RTD, Clima
- Researchers



Engagement with Practice Hubs and the Multi-actor Platform

- Mapping visions for livestock sectors in 2050
- Feedback on baseline assessments
- Feedback on innovation assessments
- Feedback on future pathways/scenarios



In Summary

- PATHWAYS will **support the transformation of Europe's livestock sector** through active industry engagement and robust science
- The project will deliver **co-developed transition pathways** that directly address societal demands
- **Regular engagement of stakeholders** with project processes will maximise synergies and ensure the projects impact



Thank you for your attention!

About Pathways

With the aim of reducing environmental impacts while addressing societal demands for safe, nutritious and affordable meat and dairy products, [PATHWAYS](#) is about identifying and increasing sustainable practices along the supply and production chains of the European livestock sector. Coordinated by the Swedish University of Agricultural Sciences (SLU) and comprising 28 partners from 12 countries, this 5-year (2021-2026) €9 million Horizon 2020 project contributes to the [EU Farm-to-Fork Strategy](#) which is at the heart of the [EU Green Deal](#).

Get in touch

-  pathways-project.com
-  media@pathways-project.com
-  [@pathways_europe](https://twitter.com/pathways_europe)
-  [PATHWAYS](https://www.linkedin.com/company/pathways)